

MAGICARD®

Pronto™

Simply the best value secure ID card printer



STANDARD



STANDARD



STANDARD



OPTION

SINGLE FEED FOR ON-DEMAND APPLICATIONS

The Magicard Pronto printer features single card feed that allows you to produce a personalized card on demand in moments. It offers edge-to-edge and sharp image quality for simple and easy card printing in a compact and highly reliable package.

ROBUST, COMPACT AND PORTABLE

The Magicard Pronto printer's aesthetic curves hide an ultra-robust product. Its light and compact design makes it easy to transport to any location and reside on any counter or desktop.

INTUITIVE FEATURES AND DESIGN

Its intuitive design with a colour-coded status LED, USB interface and Microsoft certified plug and play driver, make the Pronto easy to use, set up and operate straight out of the box.

BUDGET FRIENDLY AND SECURE

The Magicard Pronto printer delivers low cost printing and free card visual security with its built-in HoloKote anticounterfeiting watermark feature. A choice of 4 FREE standard watermark designs are selectable via the driver.

www.magicard.com



MAGICARD®

Secure ID card printers

Visual Security	The user has the option to print a HoloKote® security watermark across the card surface. When used with HoloPatch® cards, one area of the HoloKote watermark is highlighted as a high visibility security seal. A choice of 4 fixed HoloKote patterns are selectable from the printer driver.
Warranty	Two years limited depot warranty (North America and EU only). Elsewhere 1 year limited warranty.
Printer Interfaces	USB rev1.1 (USB 2.0 compatible).
Software Drivers	Windows 2000™, 2003 Server™, XP™ and Vista™ drivers all supplied with printer.
Weight	9.7 lbs (4.4kg).
Power Source	External power supply 100-240V 50-60Hz autoranging.
Dimensions	270mm L x 215mm W x 233mm H (10.6" L x 8.4" W x 9.1" H)
Environment	Sheltered office environment 10°C to 30°C (50°F to 85°F).
Print Speed	35 seconds for colour and 7 seconds for monochrome.

Dye Films	<ul style="list-style-type: none"> • YMCKO 5 panel dye film, 300 prints. (Part No. MA300YMCKO) • (Double-sided only) YMCKOK 6 panel dye film, 250 double-sided prints, colour on front, black on back. (Part No. MA250YMCKOK) • Black & overcoat (KO) resin dye film, 600 prints. (Part No. MA600KO) • White resin dye film (K) 1000 prints (Part No. MA1000K-WHITE) • Black resin dye film (K) 1000 prints (Part No. MA1000K-BLACK) • Blue resin dye film (K) 1000 prints (Part No. MA1000K-BLUE) • Green resin dye film (K) 1000 prints (Part No. MA1000K-GREEN) • Gold resin dye film (K) 1000 prints (Part No. MA1000K-GOLD) • Silver resin dye film (K) 1000 prints (Part No. MA1000K-SILVER)
Card Types/Thickness	All standard PVC ISO CR80 sized cards / 0.51mm to 1.02mm (0.020" to 0.040"). HoloPatch® cards are available. Works with HoloKote® to produce a highly-visible gold seal on the card.
Cleaning Kit	• 10 cleaning cards, 1 pen. (Part No. CK1)
Cleaning Roller Kit	• 5 cleaning rollers, 1 metal roller bar. (Part No. 3633-0054)

Pronto	Magocard Pronto single-sided ID card printer. (Part No. 3649-0001)
Pronto Mag	Magocard Pronto single-sided ID card printer with Magnetic Stripe encoder. (Part No. 3649-0002)

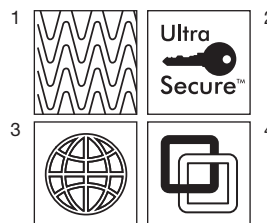
YOUR ID CARD PRINTER



HoloKote® An anti-copying watermark across the entire card surface that becomes visible when the card is viewed at an angle. The Pronto HoloKote features 4 standard designs.

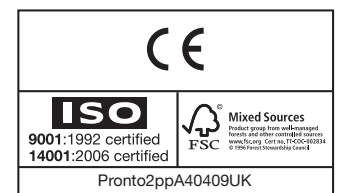


HoloPatch® Works with HoloKote to produce a highly-visible gold seal on the card, printed using HoloPatch card stock.



Magocard, HoloPatch and HoloKote are trademarks of Ultra Electronics Limited.
Windows 2000, XP and Vista are trademarks of Microsoft Corporation.

The information contained in this document reflects the current state of design and we reserve the right to change the specification without notice or obligation.



www.magicard.com

SECURIT WORLD LTD

Spectrum House, Hillview Gardens, London NW4 2JQ
Tel: +44(0) 208 266 3300
Email: sales@securitworld.com
Web: www.securitworld.com

SECURIT
UK's 1st Choice for ID

www.magicard.co.uk